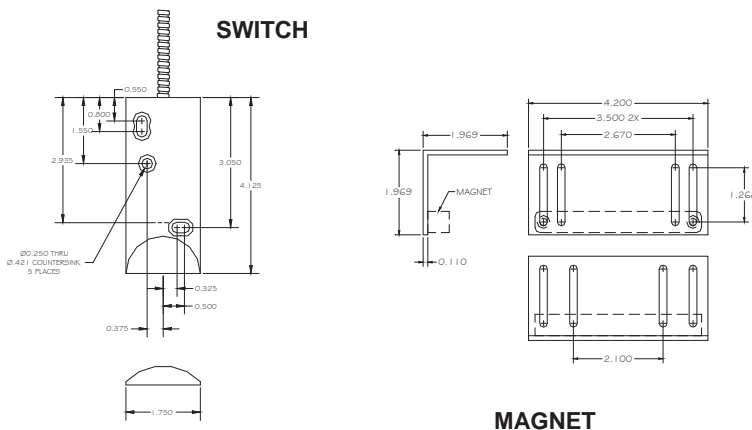


OVERHEAD DOOR DPDT BALANCED MAGNETIC SWITCH 1000-96LV BMS



FEATURES:

- * Overhead Door Floor Switch and Magnet
- * 18" Armored Cable, #22 AWG Wire Leads
- * Universal Footprint
- * Balanced Magnetic Configuration with Magnetic Tamper
- * Solid Aluminum Case
- * Lifetime Warranty
- * Safety Approvals



SPECIFICATIONS

ELECTRICAL:

Circuit: DPDT with Magnetic Tamper
Voltage: 100VDC Max.
Current: 50ma. Max.
Wattage: 10 Max.

MECHANICAL:

Gap Housing: 1 1/2" TO 2" Solid Aluminum Construction

PRINCIPAL OF OPERATION: The Flair 1000-96LV BMS Balanced Magnetic Contact utilizes three high reliability Rhodium plated reed switches, one of the three reed switches being of different sensitivity, encapsulated in epoxy inside a solid aluminum case. This results in DPDT configuration with magnetic tamper. When the rare earth magnet is in place and properly adjusted (balanced), the magnetic tamper switch will be in a state opposite to the other two switches. This normal configuration will change should one of the following occur; (1) switches 1 and 3 will

change state by either the deliberate shunting of the magnetic field or if the door/window is opened, (2) the addition of a magnetic field such as an external magnet will cause the magnetic tamper switch 2 to change state.

End-of-line resistors may be used to allow a pre-determined trickle of current to flow and permit operation from a supervised line at all times. Call Flair to request help with specifying the correct resistors. See Installation Instructions for more information.

WIRE COLOR CODE BASED ON LOOP TYPE WHEN MAGNET IS PRESENT

		Common	Closed	Open
Loop	Switch 1	Green	Red	White
	Switch 2 Magnetic Tamper	Black/White	Brown/White	Blue/White
	Switch 3	Gray	Yellow	Violet