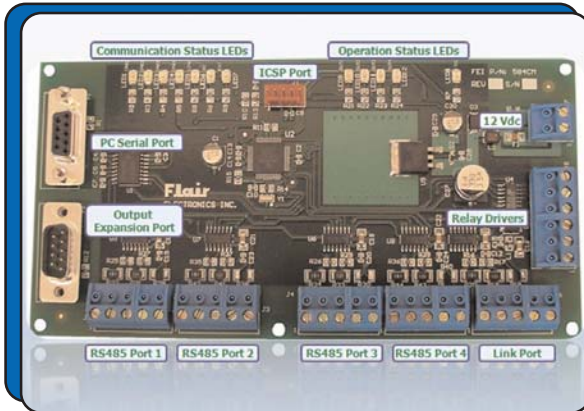


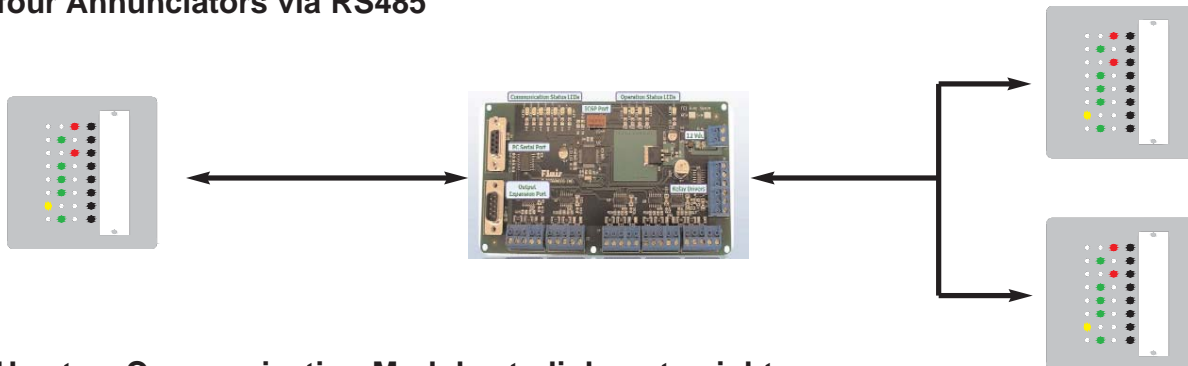
ANNUNCIATOR COMMUNICATION MODULE 500CM



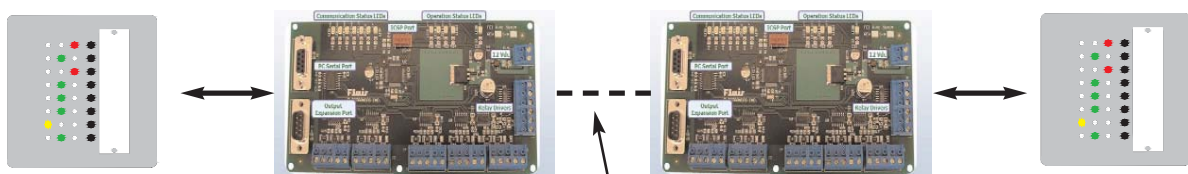
FEATURES:

- * Multiplex up to 512 Zones
- * Micro Controller Based
- * Easily Programmable
- * Individual Status LEDs

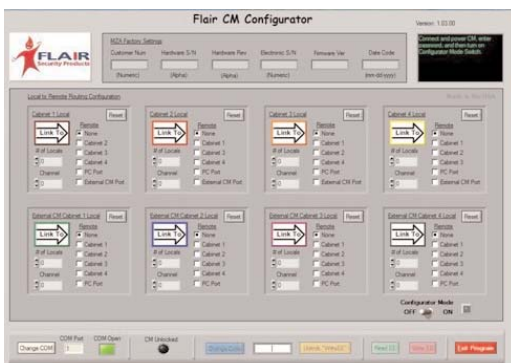
Use one Communication Module to link up to four Annunciators via RS485



Use two Communication Modules to link up to eight Annunciators via RS485, LAN/WAN or a wireless transmitter



Converter: RS232 to Ethernet
or
RS232 to Wireless



One Page, PC
Communication
Module
Configurator

The **Communication Module (CM)** is an accessory to the Flair Annunciator that controls and routes RS485 Serial Communication. The CM can be used to connect a Local Annunciator Cabinet to one or more Remote Annunciator Cabinets, each with complete display and control of the Local Zones.