

**RECESSED 3/4" DIA.  
MAGNETIC CONTACT  
PFC48-1 SERIES**

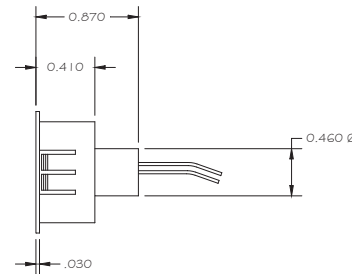
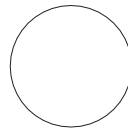
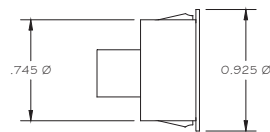


**FEATURES:**

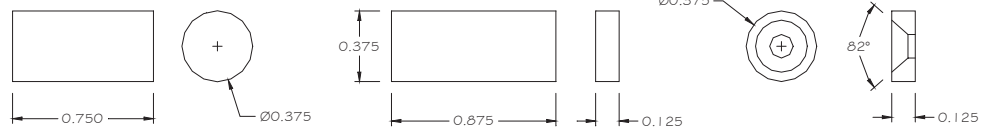
- \* 3/4" Dia. Recessed Magnetic Contact
- \* 12" #22 AWG Wire Leads
- \* Rare Earth Magnet
- \* Self Locking in Steel and Wood
- \* E.O.L. Resistors, Diodes and Supervisory Loops Available
- \* Contacts and Magnets Available Separately
- \* Colors: White, Brown, Black and Gray
- \* Lifetime Warranty
- \* Safety Approvals



**MAGNET**



**SWITCH**



**ALTERNATE RARE EARTH MAGNETS**

Part Number	Loop Type	Electrical Configuration	Gap In Steel (Inch / mm)	Maximum Initial Contact Resistance (Ohm)	Maximum Contact Rating (W)	Maximum Switching Voltage (VDC/VAC)	Maximum Switching Current (A)
PFC48-1	Closed	N/O	1/2 (13)	.100	10	100	.500
PFC48W-1	Closed	N/O	1 (25)	.100	10	100	.500
PFC41-1	Open	N/C	1/2 (13)	.100	3	30	.2
PFC41W-1	Open	N/C	1 (25)	.100	3	30	.2
PFC42-1	Open/Closed	SPDT	1/2 (13)	.100	3	30	.2
PFC42W-1	Open/Closed	SPDT	1 (25)	.100	3	30	.2
PFC42Y-1	2 X O/C	DPDT	1/2 (13)	.100	3	30	.2
PFC42WY-1	2 X O/C	DPDT	1 (25)	.100	3	30	.2