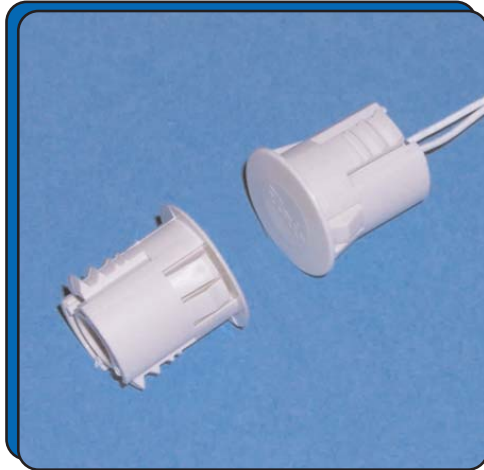


**RECESSED 3/4" DIA.
MAGNETIC CONTACT
PFC48 SERIES**

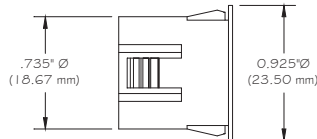


FEATURES:

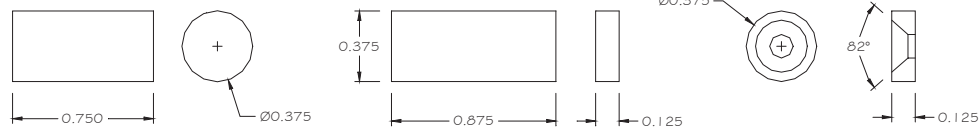
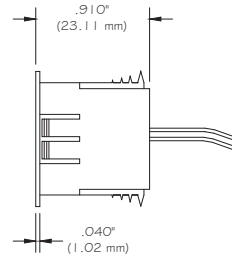
- * 3/4" Dia. Recessed Magnetic Contact
- * 12" #22 AWG Wire Leads
- * Rare Earth Magnet
- * Self Locking in Steel and Wood
- * E.O.L. Resistors, Diodes and Supervisory Loops Available
- * Contacts and Magnets Available Separately
- * Colors: White, Brown, Black and Gray
- * Lifetime Warranty
- * Safety Approvals



MAGNET



SWITCH



ALTERNATE RARE EARTH MAGNETS

Part Number	Loop Type	Electrical Configuration	Gap In Steel (Inch / mm)	Maximum Initial Contact Resistance (Ohm)	Maximum Contact Rating (W)	Maximum Switching Voltage (VDC/VAC)	Maximum Switching Current (A)
PFC48	Closed	N/O	1/2 (13)	.100	10	100	.500
PFC48W	Closed	N/O	1 (25)	.100	10	100	.500
PFC41	Open	N/C	1/2 (13)	.100	3	30	.2
PFC41W	Open	N/C	1 (25)	.100	3	30	.2
PFC42	Open/Closed	SPDT	1/2 (13)	.100	3	30	.2
PFC42W	Open/Closed	SPDT	1 (25)	.100	3	30	.2
PFC42Y	2 X O/C	DPDT	1/2 (13)	.100	3	30	.2
PFC42WY	2 X O/C	DPDT	1 (25)	.100	3	30	.2