

**SURFACE MOUNT 4"
MAGNETIC CONTACT
VIP1000-37 / 50**

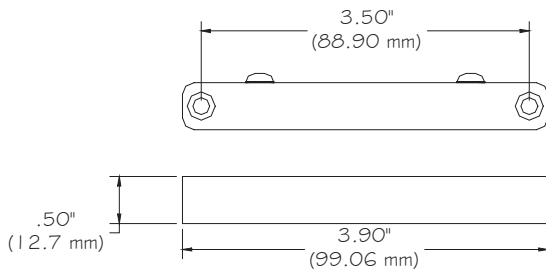


FEATURES:

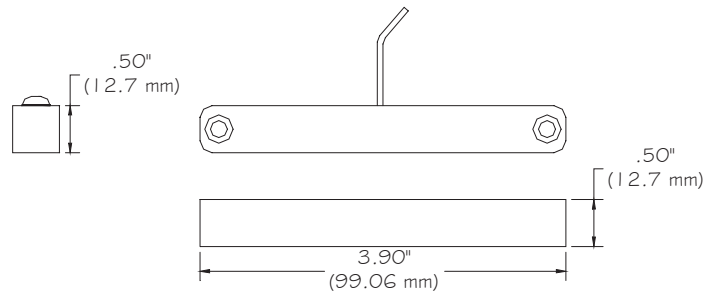
- * 4" Heavy Duty Surface Mount Contact
- * Terminals or 12" Jacketed Leads
- * Epoxy Sealed for maximum resistance to harsh environments
- * Screw Mount
- * Contacts and Magnets Available Separately
- * Colors: Gray, White and Brown
- * Lifetime Warranty
- * Safety Approvals



TERMINALS



JACKETED CABLE
(S AFTER PART NUMBER)



Part Number	Loop Type	Electrical Configuration	Gap (Inch / mm)	Maximum Initial Contact Resistance (Ohm)	Maximum Contact Rating (W)	Maximum Switching Voltage (VDC/VAC)	Maximum Switching Current (A)
VIP1000-37	Closed	N/O	1 1/2 (38.1)	.100	10	100	.500
VIP1000-50	Closed	N/O	3 (76.2)	.100	10	100	.500
VIP1000-37S	Closed	N/O	1 1/2 (38.1)	.100	10	100	.500
VIP1000-50S	Closed	N/O	3 (76.2)	.100	10	100	.500