

**2 1/2" LONG SURFACE MOUNT
MAGNETIC CONTACT
1020-24 SERIES**

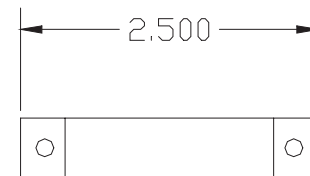
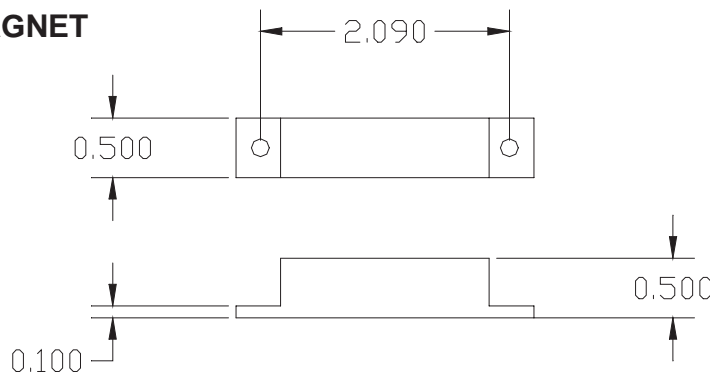


FEATURES:

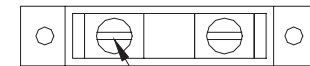
- * 2 1/2" Long Screw Mount Magnetic Contact
- * Hidden Terminals
- * Epoxy sealed for maximum resistance to harsh environment
- * Colors: White, Brown and Gray
- * Contacts and Magnets available separately
- * E.O.L. Resistors, Diodes and Supervisory Loops Available
- * Lifetime Warranty
- * Safety Approvals



MAGNET



SWITCH



BOTTOM OF CONTACT
HIDDEN TERMINALS

Part Number	Loop Type	Electrical Configuration	Gap (Inch / mm)	Maximum Initial Contact Resistance (Ohm)	Maximum Contact Rating (W)	Maximum Switching Voltage (VDC/VAC)	Maximum Switching Current (A)
1020-24	Closed	N/O	1 (25.4)	.100	10	100	.500
1020-22	Open	N/C	1 (25.4)	.100	3	30	.200
1020-34	Open/Closed	SPDT	1 (25.4)	.100	3	30	.200
1020-24W	Closed	N/O	1 1/2 (38.1)	.100	10	100	.500
1020-22W	Open	N/C	1 1/2 (38.1)	.100	3	30	.200
1020-34W	Open/Closed	SPDT	1 1/2 (38.1)	.100	3	30	.200